

# ACCENTS

## EXERCICES & APPLICATION

### LÉGENDE

A musical staff with five lines showing various drum notation symbols. Below the staff, each symbol is labeled with its corresponding drum part:

- pedale charleston
- grosse caisse
- caisse claire
- tom 1
- tom 2
- tom 3
- charleston
- charleston ouvert
- charleston fermé
- charleston semi-ouvert
- cymbale crash

### EXERCICE 1

Exercise 1 is written in 2/4 time. The notation shows four measures, each with an accent (>) over the first eighth note. The notes are quarter notes on the staff. Below the staff, the drum part is specified for two staves:

1.	D	G	D	G	D	G	D	G	D	G	D	G	D	G	D	G
2.	G	D	G	D	G	D	G	D	G	D	G	D	G	D	G	D

### EXERCICE 2

Exercise 2 is written in 2/4 time. The notation shows four measures, each with an accent (>) over the first eighth note. The notes are quarter notes on the staff.

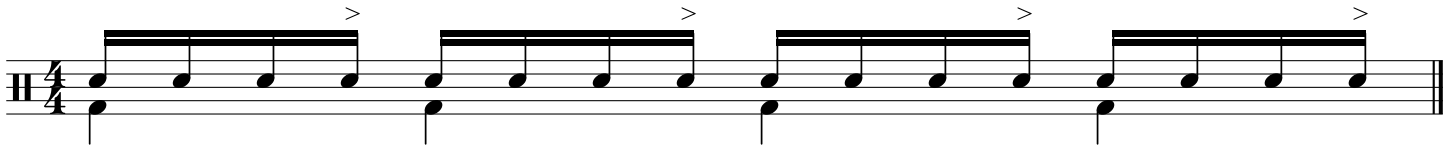
### EXERCICE 3

Exercise 3 is written in 2/4 time. The notation shows four measures, each with an accent (>) over the first eighth note. The notes are quarter notes on the staff.

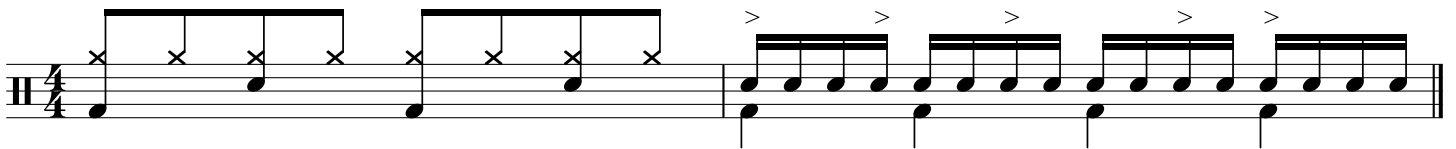
## EXERCICE 4



## EXERCICE 5



## APPLICATION - NIVEAU DÉBUTANT



## APPLICATION - NIVEAU INTERMÉDIAIRE



## APPLICATION - NIVEAU AVANCÉ

